

# **Online Insurance Information**

## **Made By :**

Prajapati Vikas (090784107404)  
Patel Vikram (090784107402)  
Patel Siddharth(100783107002)

## **Internal Guide :**

Mr. Ravi Patel

**Smt. S. R. Patel Engineering College, Dabhi**

# Members

- Group Members
  - › Prajapati Vikas (P11CE01)
  - › Patel Siddharth (D10CE02)
  - › Patel Vikram (P11CE02)
- Internal guide
  - › Mr. Ravi Patel

# What is Insurance?

Insurance provides financial protection against a loss arising out of happening of an uncertain event. A person can avail this protection by paying premium to an insurance company.

# Existing System

- Now in this time there are two website are available on internet. Which is provide only Insurance policy detail. (Like , Policy Bazaar & Insurance Pandit )

# Problem Gap

- Problems in this Existing System
  - › They provide only main branch detail.
  - › They are not provide Rating option of insurance company.
  - › They are not provide feedback option.
  - › They are not provide download facility.

# Scope

- This system provide the insurance policy detail of all company.
- It provide the main branch address of all insurance company so client can easily find the location of company and contact it.
- It also provide comparison of all insurance company.
- It also Provide Rating , feedback and .pdf file download facility.

# Technology and Literature Review

## PHP:

- › **PHP** is a general-purpose server-side scripting language originally designed for Web development to produce dynamic Web pages.

## Tools:

- › Macromedia Dream Weaver
- › XAMPP
- › PHP
- › MY SQL Server

# Macromedia Dream Weaver

## Features:

- › Site Management
- › Template
- › Cascading Style Sheets
- › JavaScript Behaviors



# MySQL

MySQL is a Relational Database Management System and it is open source free widely used software and mostly used in information systems and embedded systems. Primarily written in C/C++ It is also available for Linux, Solaris, MS Windows and other Operating Systems.

## **Features:**

- › Speed
- › Ease of use
- › Scalability
- › Internationalization
- › Multi-User support
- › Command line interface
- › Reliability
- › Multi-threaded architecture

# Users of the system

- Administrator
- User

# User:

- ›Log in
- ›company
- ›Branch
- ›Agent
- ›Policy
- ›Facility
- ›Logout

# Administrator:

- ›Log in
- ›Manage Company
- ›Manage Branch
- ›Manage Agent
- ›Manage Policy
- ›Manage Comment, Feedback And Rating
- ›Manage Comparison
- ›Logout

# H/W & S/W Requirement

- User side Hardware requirement.

PROCESSOR	Dual Core
RAM	1 GB
HDD	40 GB

- User side Software requirement.

OPERATING SYSTEM	Window XP
WEB BROWSER	IE or above

- Server side Hardware requirement.

PROCESSOR	X-eon
RAM	2 GB
HDD	250 GB

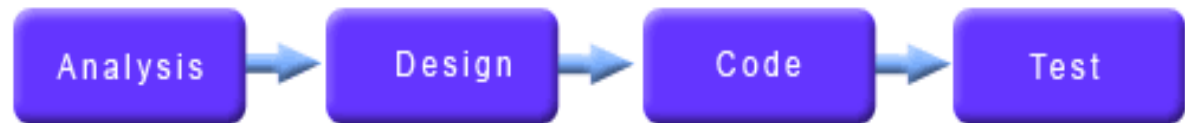
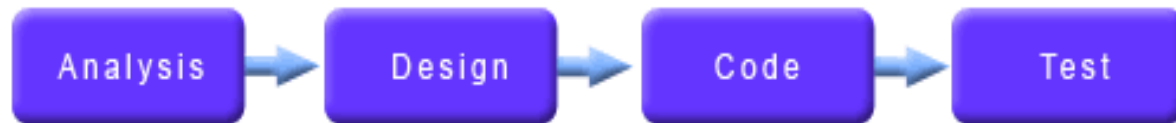
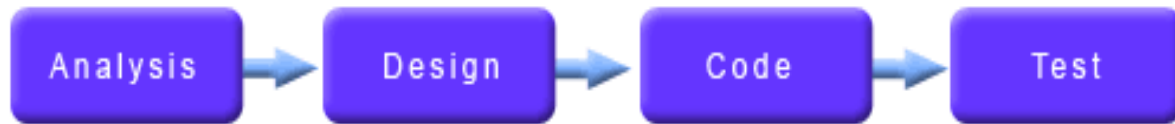
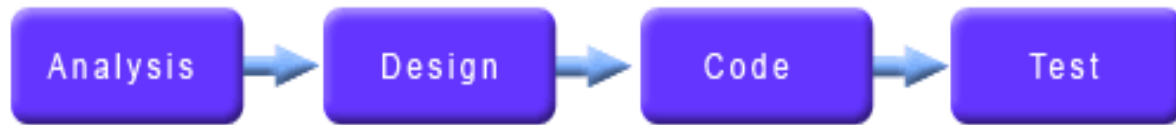
- Server side Software requirement.

OPERATING SYSTEM SERVER	Window 7
FRAMEWORK	PHP , Apache, My SQL
FRONT END	Adobe Dreamweaver CS3
BACK END	My SQL
WEB SERVER	XAMPP

# SCHEDULE REPRESENTATION

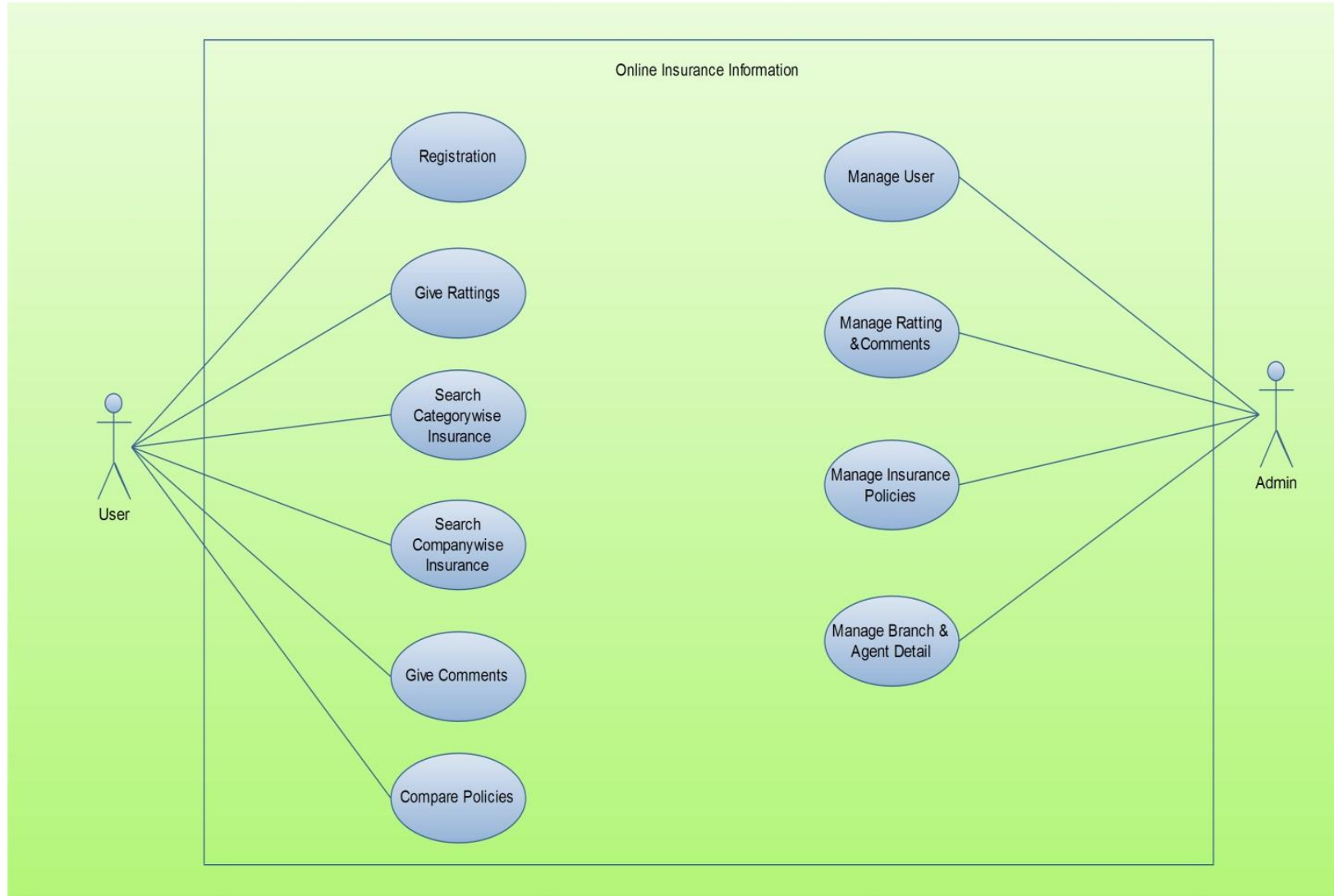
<b>Weeks Month</b>	<b>Week 1</b>	<b>Week 2</b>	<b>Week 3</b>	<b>Week 4</b>
<b>1st Month</b> July-2012	Introduction of Definition	Understanding Project Definition	Requirement Gathering	Study of project related website and collecting related data
<b>2nd Month</b> Aug-2012	Analysis of Project Requirement	PHP fundamentals learning	PHP Controls, Design, Development Learning	Layout Designing
<b>3rd Month</b> Sept-2012	Data Flow Diagram Preparation	Activity Diagram Preparation	Use-Case Diagram Preparation	Class Diagram Preparation
<b>4th Month</b> Oct-2012	Data Dictionary Preparation	Object Oriented Diagram Preparation	State Transition Diagrams	Project GUI Preparation

# Incremental model

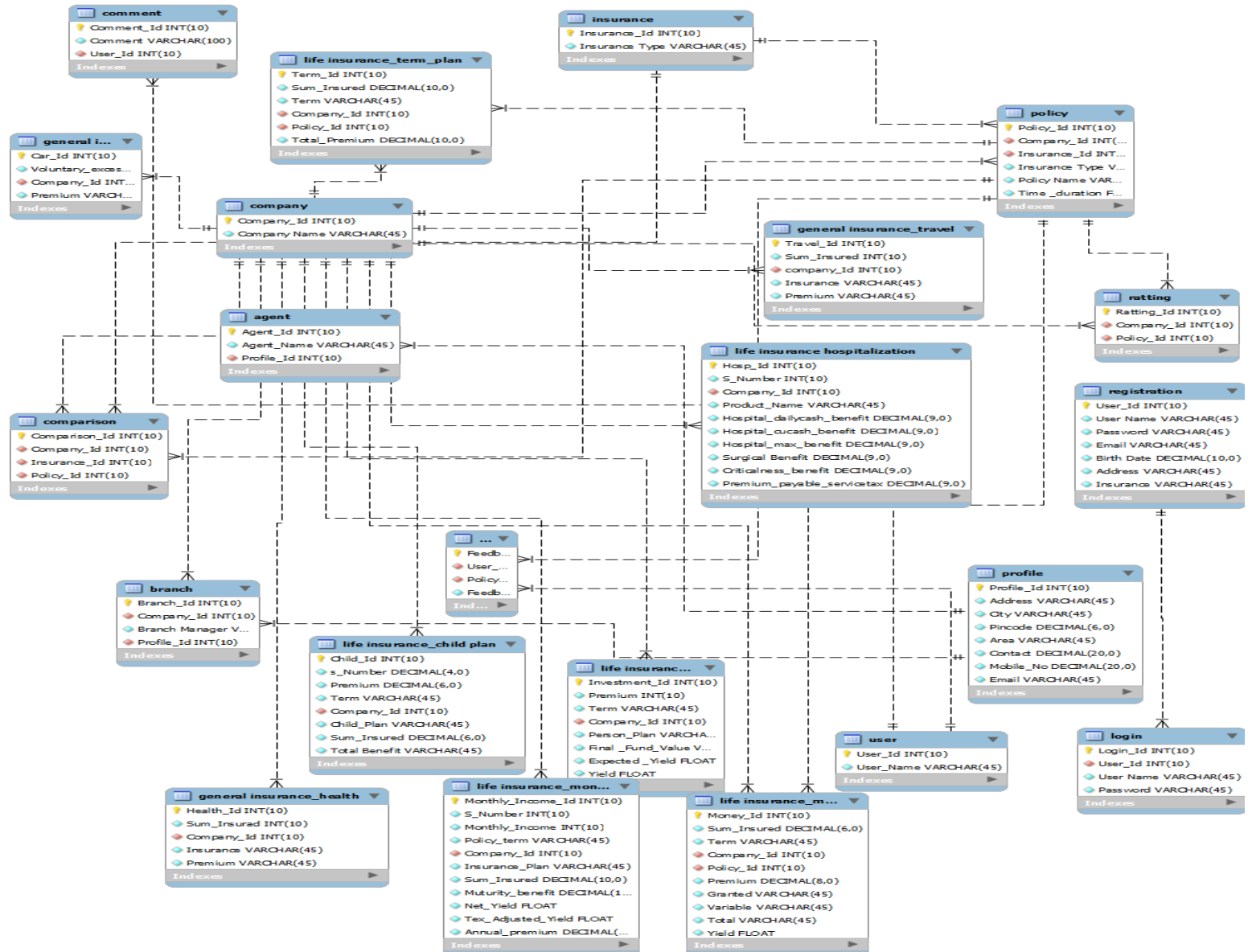




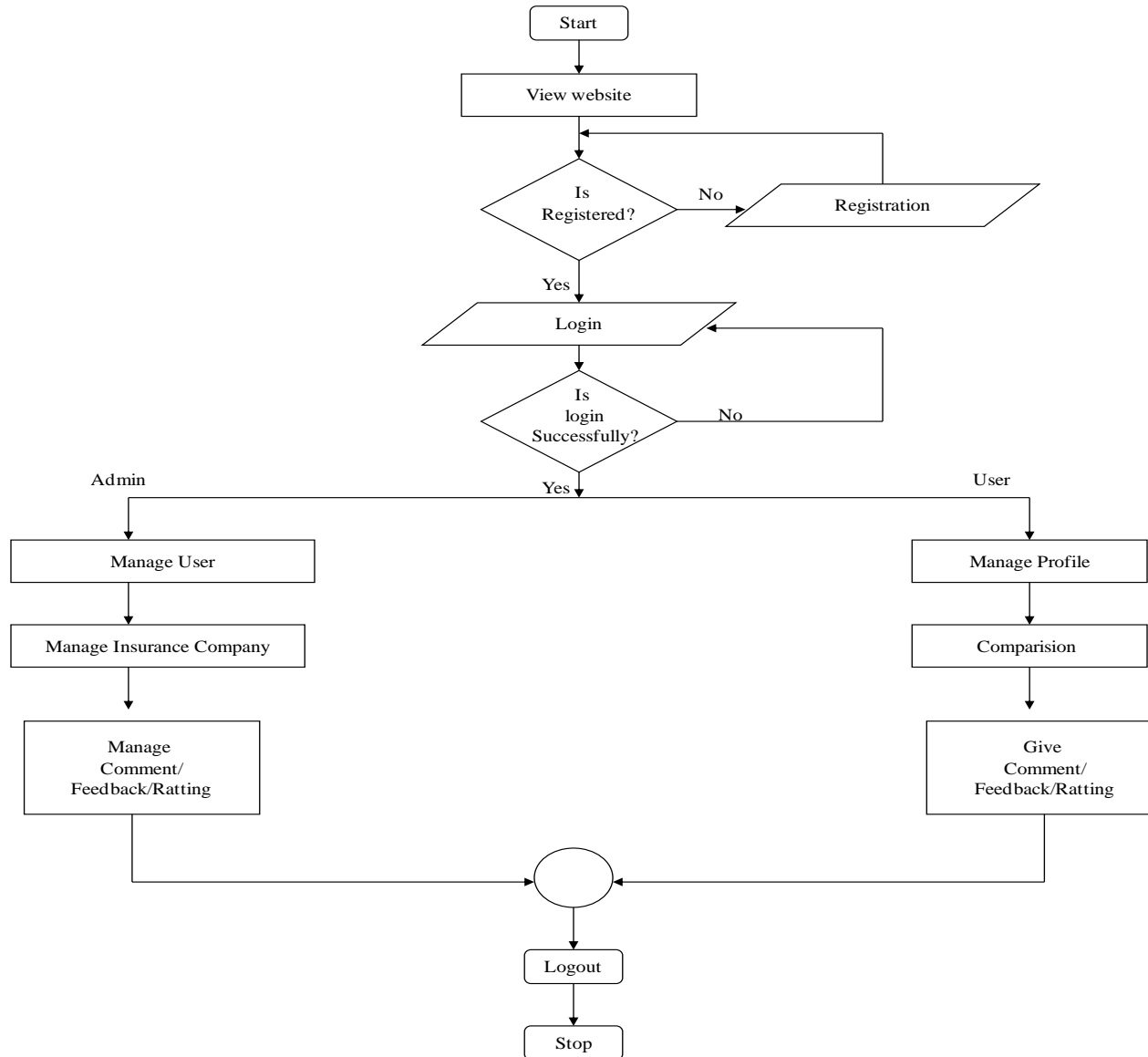
# Use-Case Diagram



# Class Diagram:

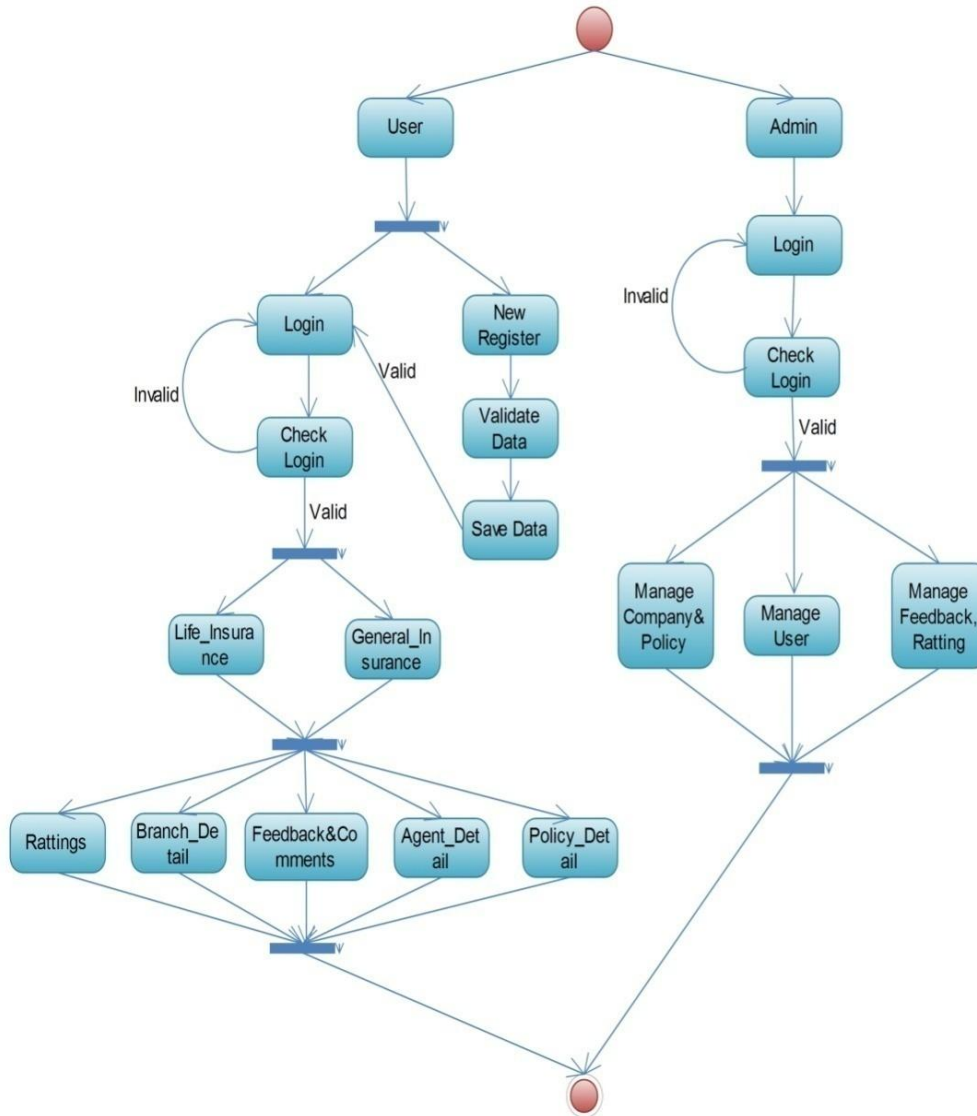


# Flow Chart Diagram



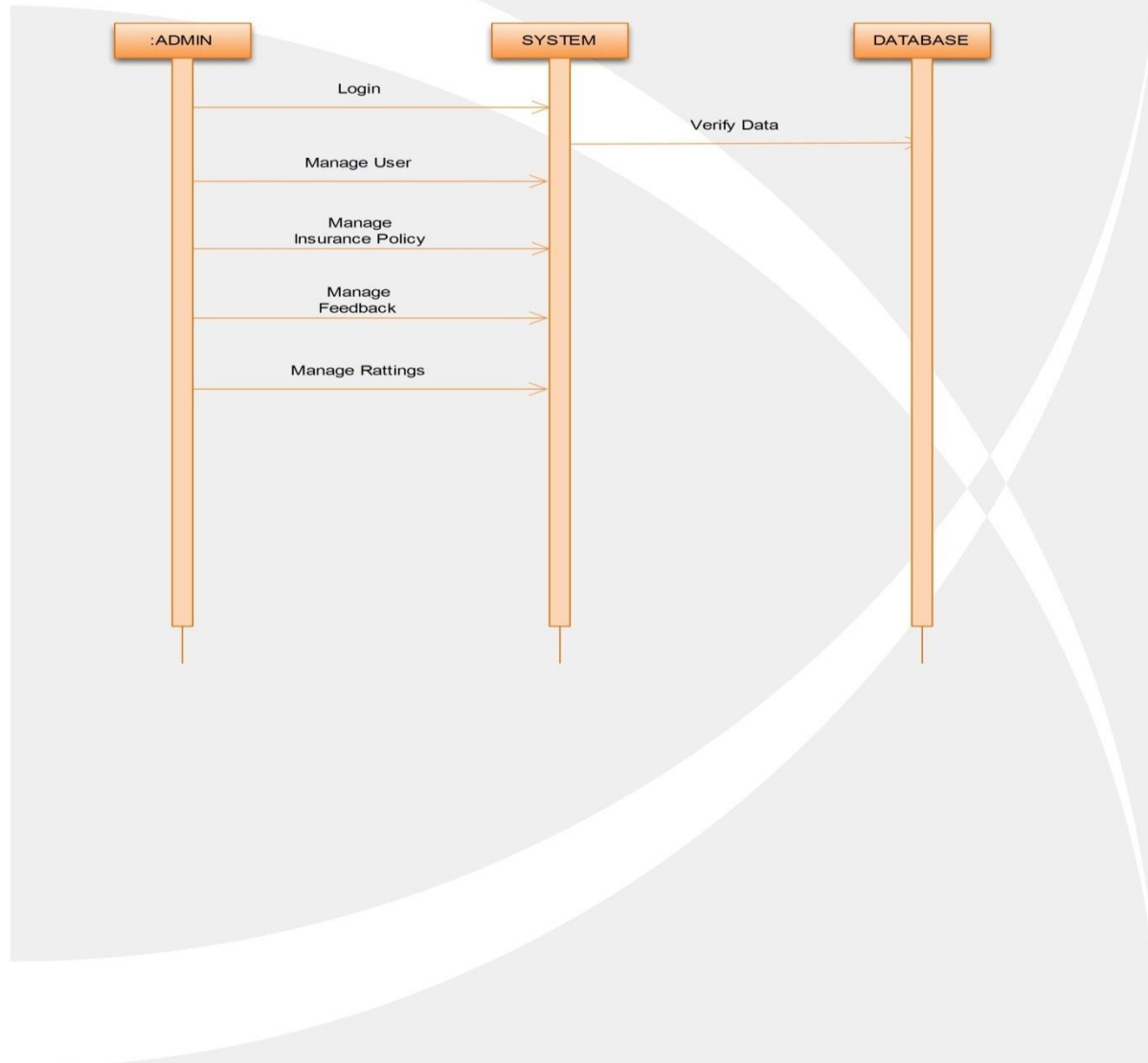
# State Diagram

State chart Diagram

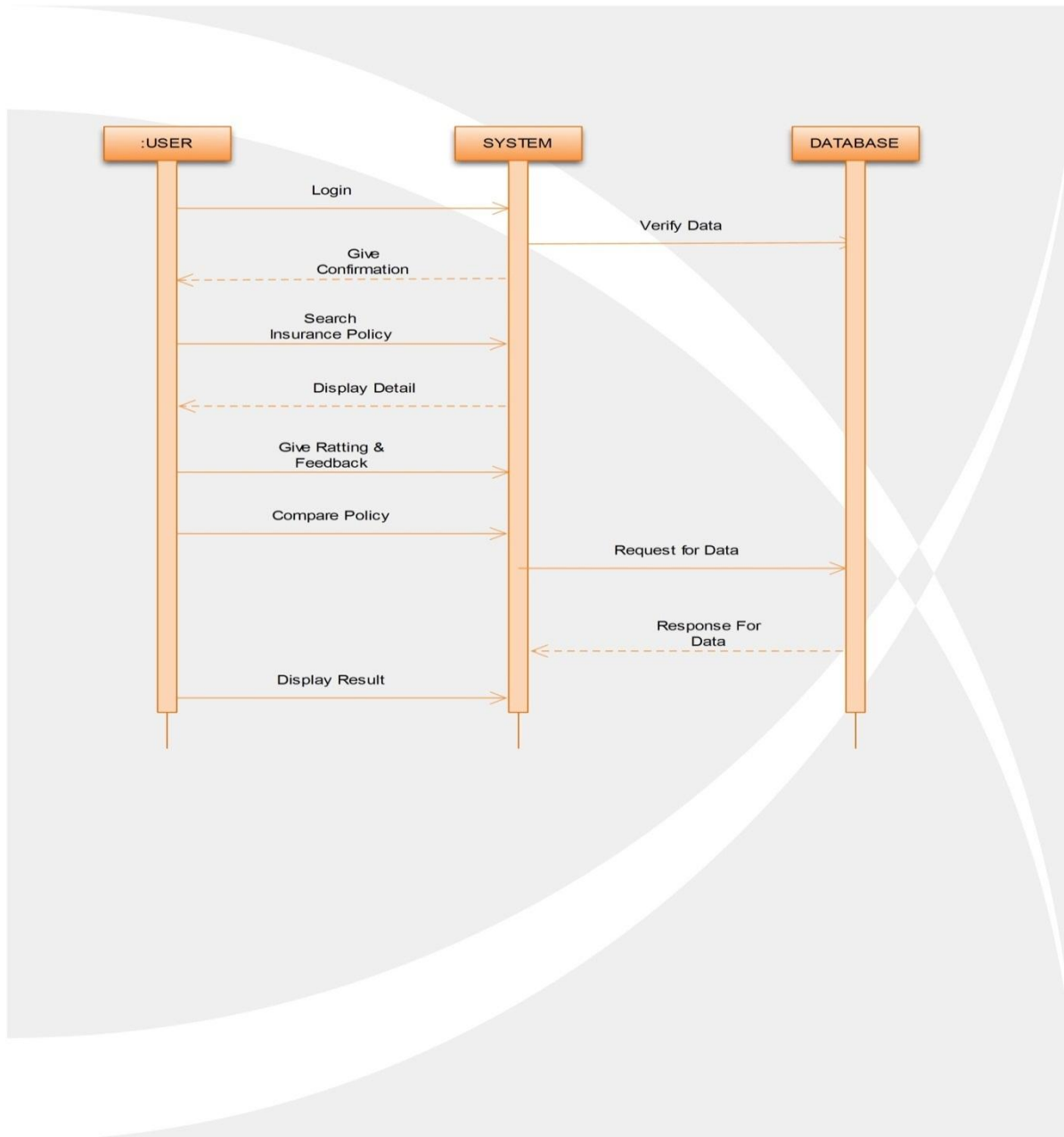


# Sequence Diagram

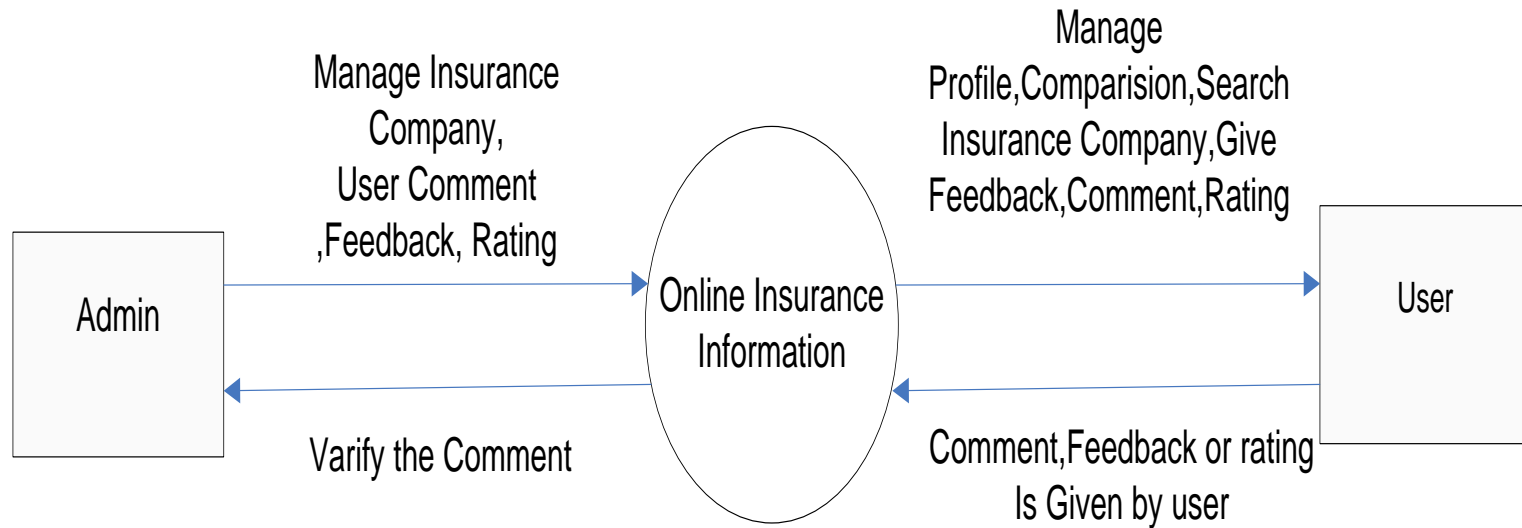
## Admin Side



# User Side



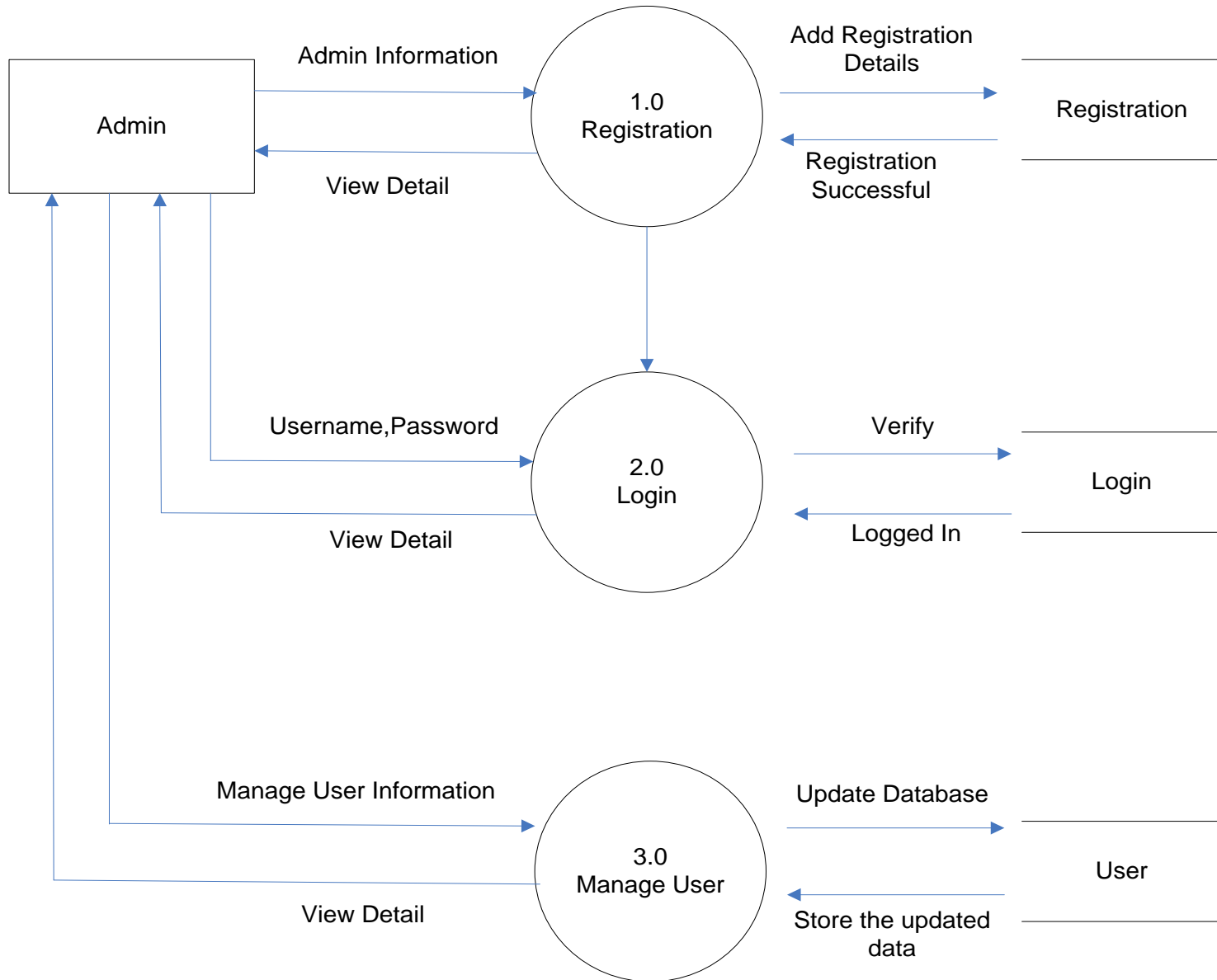
# Context Level Diagram



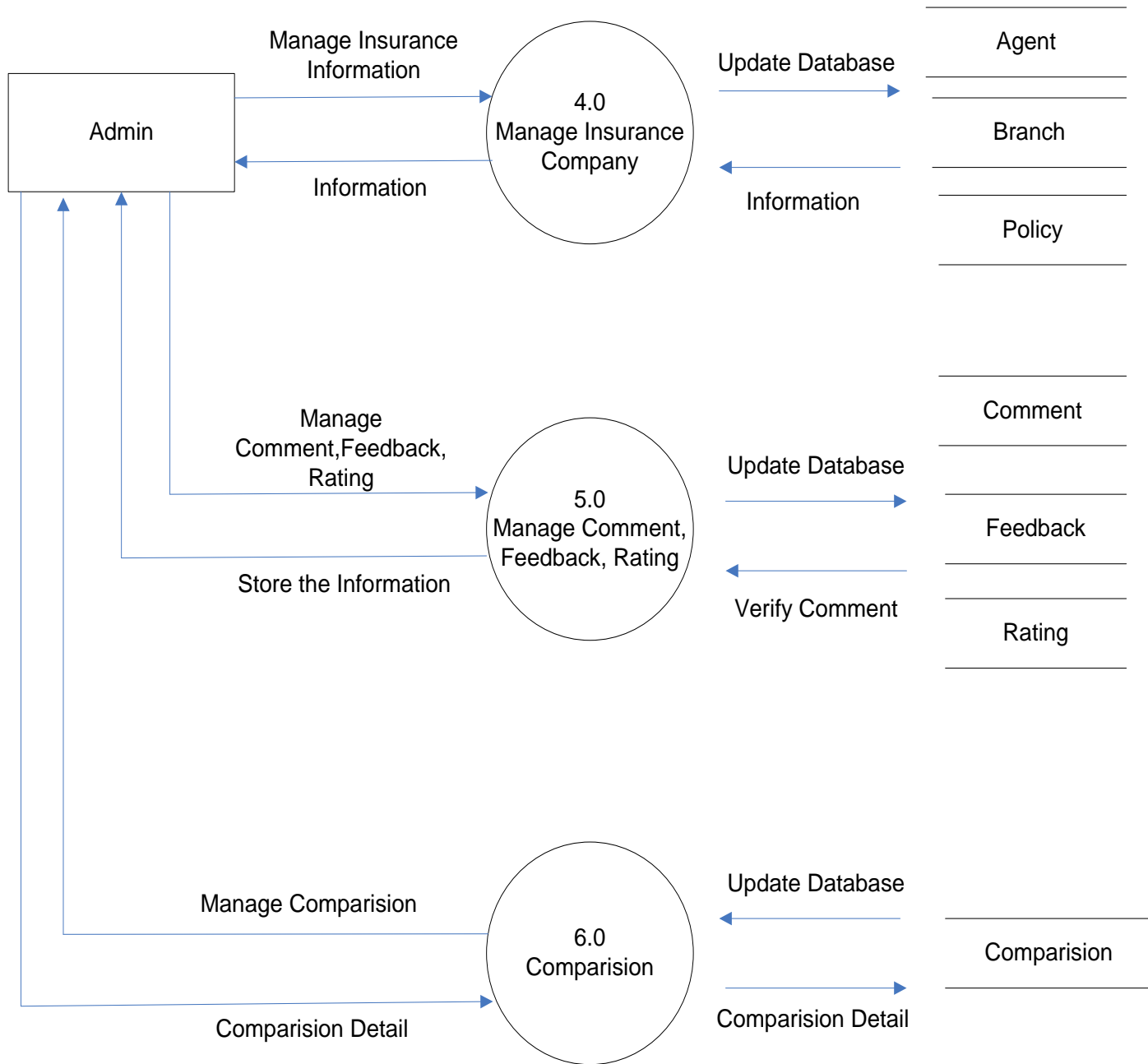
## Diagram

- LEVEL -1 DFD OF ADMIN
- LEVEL -1 DFD OF USER
- LEVEL -2 DFD OF USER

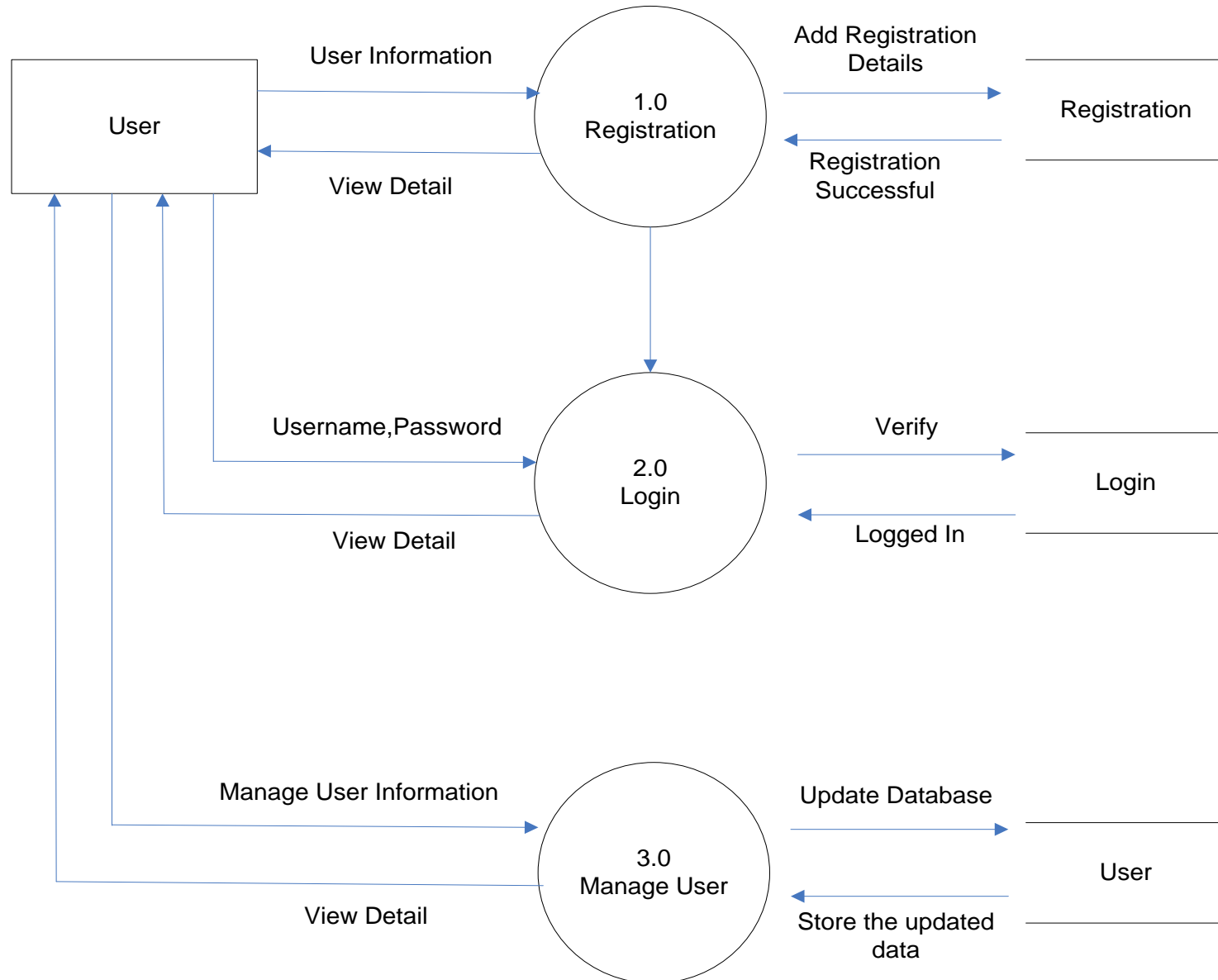
# First Level DFD of Admin

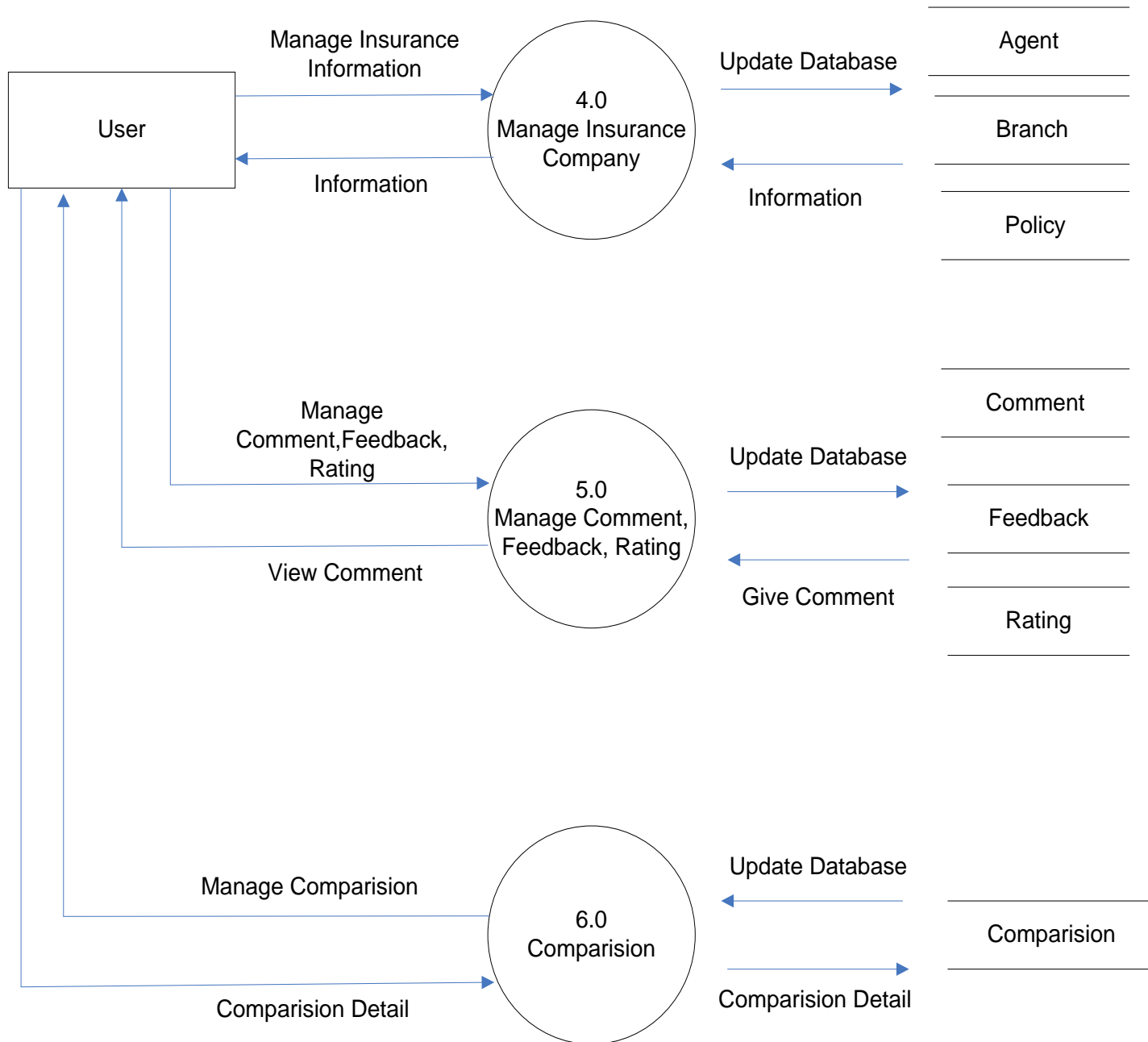




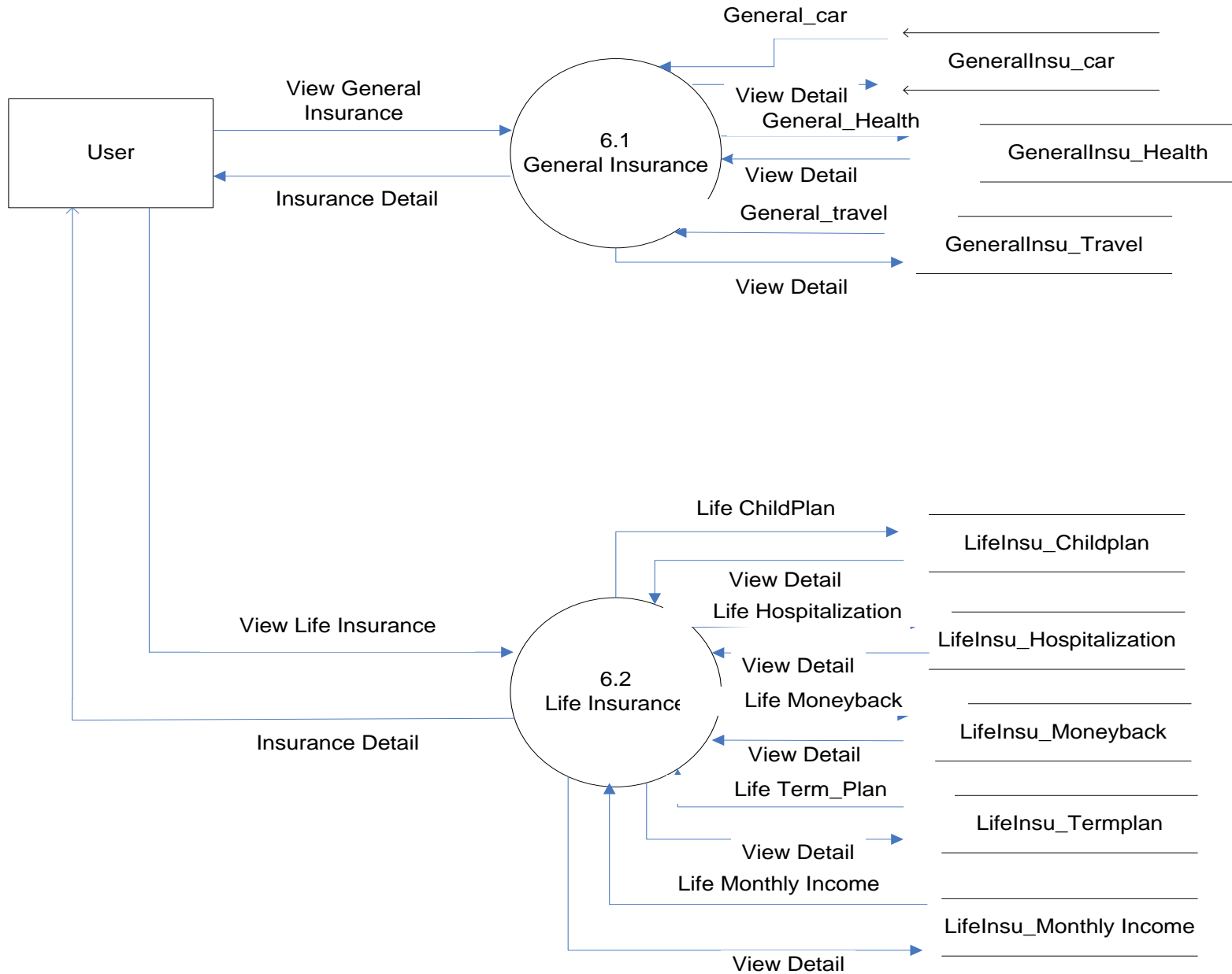


# First level Diagram of User





# Second level Process of 6.0



# Reference

- [www.insurancepandit.com](http://www.insurancepandit.com)
- [www.policybazaar.com](http://www.policybazaar.com)
- [www.insuranceguru.com](http://www.insuranceguru.com)

**Thanks...!!!**